

HISTORIC MIXED-USE BUILDING

AVAILABLE FOR LEASE

301 CHERRY STREET
(OLD CITY) PHILADELPHIA, PA



301CHERRYSTREET.COM



HISTORIC BUILDING

Historic brick facade with cast iron columns and arched windows.



OLD CITY PHILADELPHIA

Charming, creative, multi-layered neighborhood known as America's most historic square mile.



MIXED-USE

Former industrial building meticulously converted into boutique mixed-use building.

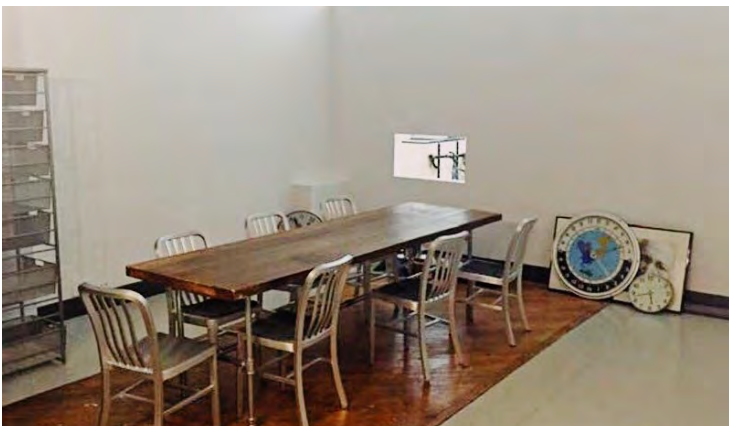
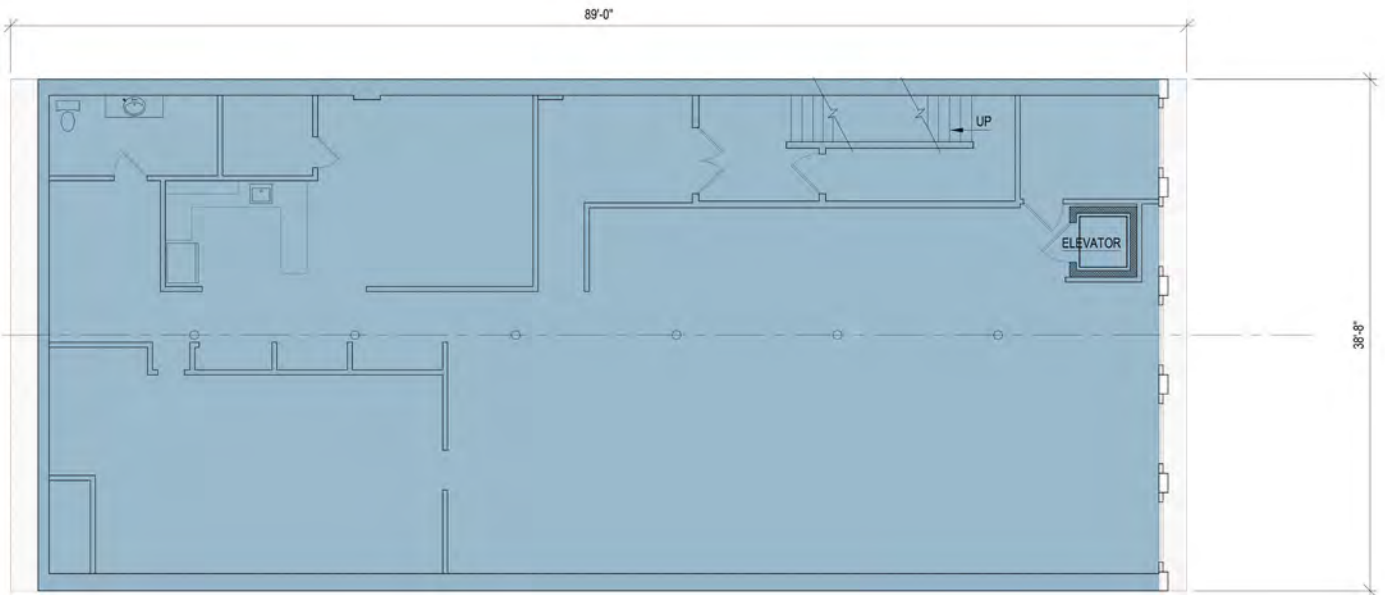
3,442 SF & 3,942 SF SUITES

This 14,264 SF double-wide, former industrial building has been meticulously converted into a boutique mixed-use building. The historic brick facade with cast iron columns and arched windows add to the charm, character, and culture of its Old City Philadelphia location. The building is situated on a quiet, tree-lined side street, steps away from Old City's vibrant North 3rd Street, home to numerous restaurants, cafes galleries and boutiques.

Potential uses include retail, artistic or creative office. 3,442 SF second floor and 3,942 SF third floor suites are available for lease. All utilities separately metered. Elevator access to all floors.

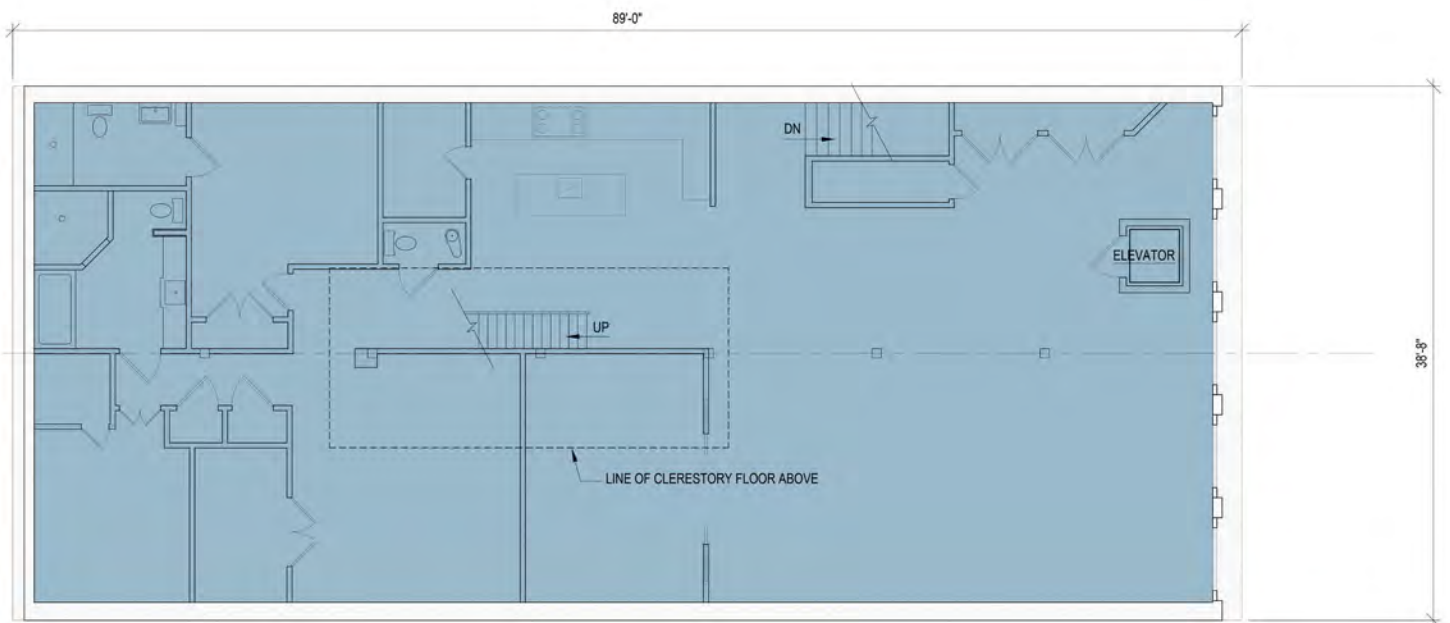
3,442 SF SECOND FLOOR

Sleek 3,442 SF creative office leased through 2019. Timeless modern industrial interior design throughout kitchen and office area.



3,942 SF THIRD FLOOR

The 3,942 SF third floor features spectacular, custom-built 2Br, 2.5Ba with outstanding architectural detail throughout, and 1,500 SF panoramic roof deck. Space provides an unique opportunity for commercial end-user, residential owner-occupant, live-work, investor or condominium conversion.






- ✓ 14' ceiling height with exposed wood beams
- ✓ Abundant natural light via large arched windows & skylights
- ✓ Expansive living room & office with custom pocket doors
- ✓ Modern kitchen with open layout
- ✓ Tiled bathrooms in each bedroom
- ✓ Original hardwood floors
- ✓ Elevator access from ground floor
- ✓ Charming architectural detail throughout space



CONTACT

To learn more, please
call Rob Mericle at
570.823.1100
for more information or
to arrange a building tour.

ROBERT K. MERICLE
President & CEO

-  570.823.1100
-  301 Cherry Street
Philadelphia, PA 19106
-  rmericle@mericle.com

